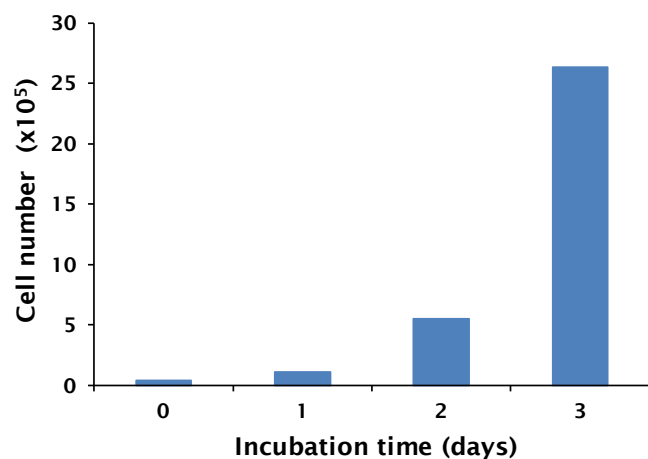


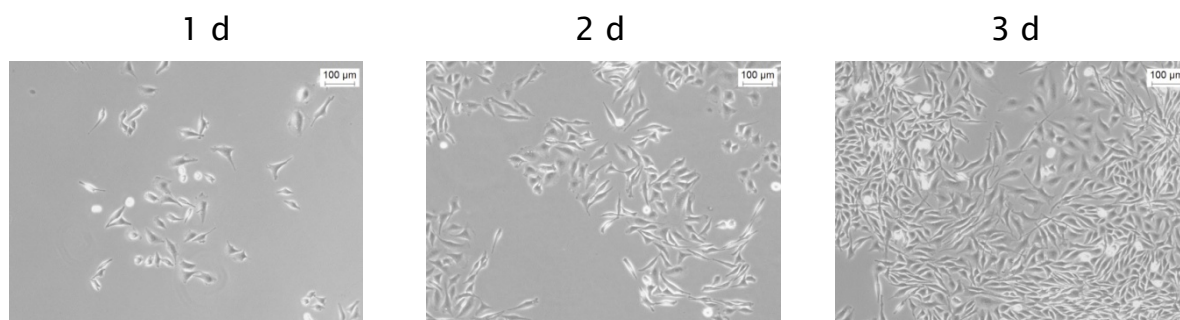
Cell type: CHO-K1

Performance of Eppendorf Cell Culture Consumables (TC treated)

Procedure: CHO-K1 cells were seeded in appropriate culture medium (Ham's F-12, 10 % FBS). Cell Culture vessels were incubated at 37 °C with a humidified 5% CO₂ atmosphere. Cell growth and morphology was monitored on day 1, 2 and 3 post-seeding.



Bars represent average count of two wells of an Eppendorf 6-Well Cell Culture Plate



Representative light microscope images (100X magnification)

The tissue culture (TC) treated surface of Eppendorf Cell Culture Consumables allows optimal attachment and homogeneous growth of **CHO-K1** cells.

Your local distributor: www.eppendorf.com/contact

Eppendorf AG · 22331 Hamburg · Germany

eppendorf@eppendorf.com · www.eppendorf.com

www.eppendorf.com

Eppendorf® and the Eppendorf logo are registered trademarks of Eppendorf AG, Germany. U.S. Design Patents are listed on www.eppendorf.com/ip. All rights reserved, including graphics and images. Copyright © 2014 by Eppendorf AG.